



MEETING MINUTES

DATE	9-21-15			
MEETING INFORMATION				
MEETING DATE	Tuesday, September 15, 2015		MEETING TIME	6:00 – 7:20 PM
MEETING NAME	Advisory Task Force Meeting #1		MEETING LOCATION	High School Theater
PROJECT NAME	Prairie du Chien Prereferendum Services			
FEH #	2015315			
MINUTES NOTES BY	Emily Hilgendorf			
ISSUE DATE	9-21-15			
ATTENDEES	NAME	ORGANIZATION	PHONE	EMAIL
	Kevin Eipperle	FEH Design	563-583-4900	kevine@fehdesign.com
	Emily Hilgendorf	FEH Design	563-583-4900	emilyh@fehdesign.com
	Gary Schulte	FEH Design	563-583-4900	garys@fehdesign.com
	Advisory Task force members	See Attached		
DISTRIBUTION				
	Design Team, Core Committee Members, Advisory Task Force Members			
	PURPOSE			
	Initial planning meeting for the core committee			
	DISCUSSION			

1) Introductions

2) Review agenda and today's goals

a) Advisory task force role

- i) The role of the advisory task force is to share their opinions and ideas, participate in development and analysis of solution options to make recommendations to the core planning committee and decision making School District Board of Directors. This will help to inform those decision makers on what the community is interested in and will support for the future of the public school district.

3) Review Goals For Success

- a) See attached sheet for Goals for Success
- b) These goals are meant to be high level aspirations which will be used at every meeting to provide a framework of why this process is happening and to focus conversation direction. They will also serve as a way to look retrospectively at the process and outcomes to determine level of success.
- c) As a side note, participants were in consensus that the theater should

be airconditioned.

4) Review project Scope and options

- a) Condition Assessments
- b) Program of space needs – curriculum based
- c) PdC District Finance
 - i) Capital Budget
 - (1) Money allocated to this budget can be used by the school district for renovations and other capital project expenses.
 - ii) Operational Budget
 - (1) Money allocated to this budget can only be used on the costs associated with running the school district operations. This includes teacher salaries, utilities and programs.
 - iii) It is important to note that money cannot be transferred between these accounts, but must stay in the budget to which it was assigned. For example, it is possible for the school to have plenty of capital money, and at the same time have a shortage of operational money to pay for teachers or heat the buildings. Recent State of Wisconsin action is impacting this.

5) Review project approach

- a) Facility assessment
 - i) This was done to determine the current state of the three buildings and the maintenance, ADA, and code items which will have to be addressed in the next 10 years.
 - ii) Costs were associated with each of the items discussed in the facility assessment. These budgets reflect what it would cost to do individual items listed. If items were combined into a larger project the cost would most likely go down.
 - (1) The industry standard for maintenance is \$1/ square foot of building per year.
 - iii) Assessments have also been done by CSA (Energy) and EMC (Safety) for each of the schools.
 - iv) A 10 year plan is being developed with the administration and maintenance teams for all of the items discussed in the assessments as well as other improvement items.
- b) Space Needs & standards
 - i) These numbers were determined based on curriculum needs and consideration about enrollment and class sizes were taken into account. Administrators and key staff were involved in the development.
 - (1) The major deficit at BA Kennedy is in the classroom sizes especially in the 3K and 4K rooms.
 - (2) At Bluff View, there is not enough PE Storage room and the size of the gym around the courts is not adequate. A second court is needed for safe use.
 - (3) The High School is lacking in multiple areas namely being the



gym, theater, Commercial and Technical Education, science classrooms, and GED class space.

- ii) The space needs chart shows the current square footage, the national standard determined by the Council for Education Facility Planners International, and FEH DESIGN's recommendation.
- iii) The number of seats in a possible larger theater in the space plan was developed by creating a schedule of current and planned uses in the theater and analyzing the number of seats needed for those events. See attached schedule.
- iv) Grants are available through a number of sources including, CESA which has conducted a report for the school district, EMC which is working with the school district as well, along with many other private and public sources. FEH tracks many of these sources.
- c) Determine & weight decision making criteria
 - i) See attached sheet for criteria that was suggested by the participants during the meeting.
 - ii) If anyone thinks of any other criteria which should be considered please contact the district or FEH DESIGN and we will include it.
- d) Publicity prior to design workshops
 - i) October 7th and 8th the design team will be working from 8 am until 7:30 PM the public meetings at Bluff View on design solutions. These will be open to the public and everyone is welcome to participate in and share ideas and opinions.

6) Review Schedule

- a) Dates & location for future meetings & workshops
 - i) Oct. 1, Oct. 7, Oct. 8, Oct. 13, Nov. 9

7) Next meeting assignments and date; October 1, 2015 6:00 PM

- a) Think about criteria and bringing others

This is the author's understanding to the items discussed. Please notify us of any discrepancies within 7 days so revised minutes can be issued.

This is the author's understanding to the items discussed. Please notify us of any discrepancies within 7 days so revised minutes can be issued.

Attachments

Sign-in, Goals for Success, Auditorium Seating Schedule, Criteria Chart



Prairie du Chien School District Goals for Success

July 28, 2015

1. Enrich students and the community culturally, educationally, and physically
2. Foster students who are skilled and capable to thrive and compete in the world
3. Attract and retain high level educators and staff
4. Not increase the tax rate
5. Maintain a sustainable operating budget
6. Promote economic development and diversity in the community
7. Provide facilities that support family and community values
8. Provide a safe and welcoming school environment
9. "If you do something, do it right!"
10. This will be a publicly driven process.

Event Planning

Prairie du Chien School District
08/21/2015



Event	Date	Frequency/Length	Seats Needed
Back to School Meetings	August	Once	440
Freshman Orientation	August	Once	340
Athletic Code Meeting	September	Once	500
Homecoming	October	Once	400
Play Rehursals	Sep.-Oct.	3/Week for 2 months	
Play	November	8 Performances	440
		Dress Rehursal	
		Matinee with HS Students	275
Veteran's Day Assembly	December	Once	440
The Nutcracker	December	One Weekend	300
Winter Concert: Band 6th-12th	December	Once	650
Winter Concert: Choir 6th-12th	December	Once	650
Winter Concert: 4 year old Kindergarden	December	Once	375
Winter Concert: K-2nd	December	Once	1200
Winter Concert: 3rd-5th	December	Once	1200
Middle School Play Rehursal	Jan. - Feb.	2-3/Week	
Middle School Play	March	3 Performances	300
High School Play	March/April	2 Practices /Week	
		Dress Rehursal	
		Matinee	
		4 Performances in 1 week	275
P&R Play	March	2 Practices	
		Dress Rehursal	
		1 Performance	275
HS Band Concert	March	Once	200
Major Work Concert/Choral	March	Once	350
Testing ACT	March	Once	100
AP Testing	May	Multiple Sections	20-110
Senior Class Night	May	Once	850-650
Graduation	May	Once	1200-1500
Concert Festival	May every 6 years (next in 2016)	Weekend	Varies
Pops Concert	September	Once	600
Mizzola Children's Theater Rehursal	1 Month	Weekly Rehursal	
		Matinee	
		1 Performance	
Community for the Performing Arts		5-6/Year	500-1200
Dance recital	May	Once	1000
Brenda's School of Dance	May	Once	1000
4H Drama Festival	Every 4 years		400
Magic Show			
Chamber Music			
Speakers			
Professional Theater Groups			
Average			509

Prairie du Chien

School District

[illegible]

Prairie du Chien School District
Facility Assessment
2015-8-28



Program	Area in SF		
	Existing	State Standards	Proposed
Kennedy Elementary			
Administration			
entry office area	245	250	250
Principals office	170	250	200
guidance office	170	160	170
Nurse office/exam	120	100	120
cot room	90	100	90
restroom	48	60	48
storage	100	40	100

Total	943	960	978
Gross Multiplier for Circulation and Corridors (20%)	188.6	144	146.7
Gross Total Area	1131.6	1104	1124.7

3K			
Classroom - half day, 12 students per room, five sections	655	1200	1200
Classroom	948	1200	1200
Classroom	804	1200	1200

Total	2407	3600	3600
Gross Multiplier for Circulation and Corridors (20%)	481.4	936	936
Gross Total Area	2888.4	4536	4536

4K			
Classroom - full day, 18 students per room, four sections	847	1200	1200
Classroom	1638	1200	1200
Classroom	864	1200	1200
Classroom - needs restroom	864	1200	1200
Classroom	0	1200	1200

Total	4213	6000	6000
Gross Multiplier for Circulation and Corridors (20%)	842.6	960	960
Gross Total Area	5055.6	6960	6960

Kindergarden			
Classroom - full day, 18 students per room, five sections	1119	1200	1200
Classroom	1091	1200	1200
Classroom	994	1200	1200
Classroom - needs restroom	994	1200	1200

Program	Area in SF		
	Existing	State Standards	Proposed
Classroom	1029	1200	1200

Total	5227	6000	6000
Gross Multiplier for Circulation and Corridors (20%)	1045.4	900	900
Gross Total Area	6272.4	6900	6900

Program	Area in SF		
	Existing	State Standards	Proposed
First Grade			
Classroom - full day, 18 students per room, four sections	752	1000	1000
Classroom	896	1000	1000
Classroom	1064	1000	1000
Classroom	896	1000	1000
Classroom	0	1000	1000

Total	3608	5000	5000
Gross Multiplier for Circulation and Corridors (20%)	721.6	1000	1000
Gross Total Area	4329.6	6000	6000

Science/Social Studies			
Classroom	547	1200	1000
Classroom	600	1200	1000

Total	1147	2400	2000
Gross Multiplier for Circulation and Corridors (20%)	229.4	480	400
Gross Total Area	1376.4	2880	2400

Library and Computer Tech			
Library	4161	3,000	4000
Storage	264	250	300
Computer Lab	778	900	900

Total	5203	4150	5200
Gross Multiplier for Circulation and Corridors (20%)	1040.6	830	1040
Gross Total Area	6243.6	4980	6240

Athletics and Cafeteria			
Gym	2361	6448	6448
Hallway Storage	269		
Hallway Storage	72		
Hallway Storage	77		
PE storage		500	500
PE / Cafeteria	3432	3250	3500
Hallway Storage	314	300	300

Total	6525	10498	10748
Gross Multiplier for Circulation and Corridors (20%)	1305	2099.6	2149.6
Gross Total Area	7830	12597.6	12897.6

Program	Area in SF		
	Existing	State Standards	Proposed
Arts and Language			
Art Room	992	1200	1200
Art Storage/kiln	120	160	160
Music Room	1577	1200	1200
Music Storage	150	160	160
Spanish	768	900	900
Chinese	768	900	900
Music Storage	1	160	160
Music Room	752	1200	1200

Total	5128	5880	5880
Gross Multiplier for Circulation and Corridors (20%)	1025.6	1176	1176
Gross Total Area	6153.6	7056	7056

Special Education			
Classroom - Speech	420	450	450
Classroom - Speech	381	450	450
Classroom - autism	909	900	900
OT/PT - Classroom (will double as art)	909	900	900

Total	2619	2700	2700
Gross Multiplier for Circulation and Corridors (20%)	523.8	540	540
Gross Total Area	3142.8	3240	3240

Social Studies			
Classroom	909	900	900

Total	909	900	900
Gross Multiplier for Circulation and Corridors (20%)	181.8	180	180
Gross Total Area	1090.8	1080	1080

Mechanical and Custodial			
Boiler Room	935	1200	1200
Custodial	900	900	900
Staff lounge	300	300	300
Satff Toilet	64	80	80
Kitchen/serving	700	1000	1000
food storage/cooler/freezer	300	800	800
receiving	600	350	350
Teacher work room	160	250	250
IT room	36	60	60
District Stock Room	1725	0	0

Program	Area in SF		
	Existing	State Standards	Proposed

Total	5720	4940	4940
Gross Multiplier for Circulation and Corridors (20%)	1144	988	988
Gross Total Area	6864	5928	5928

Building Total Area

52,379

63,262

64,362

Prairie du Chien School District
Facility Assessment
2015-8-17



Program	Area in SF		
	Existing	State Standards	Proposed
Bluff View Intermediate School			
Administration			
Office	529	3000	3000
Office	837		
Office	650		
Office	350		
Office	278		
Lounge	296		

Total	2940	3000	3000
Gross Multiplier for Circulation and Corridors (20%)	588	450	450
Gross Total Area	3528	3450	3450

2nd Grade			
Classroom	933	900	900
Classroom	917	900	900
Classroom	855	900	900
Classroom	854	900	900
Classroom	917	900	900
Classroom - special ed	595	600	600

Total	5071	5100	5100
Gross Multiplier for Circulation and Corridors (20%)	1014.2	1326	1326
Gross Total Area	6085.2	6426	6426

3rd Grade			
Classroom - special ed	596	600	600
Classroom	914	900	900
Classroom	823	900	900
Classroom	822	900	900
Classroom	913	900	900
Classroom	931	900	900

Total	4999	5100	5100
Gross Multiplier for Circulation and Corridors (20%)	999.8	816	816
Gross Total Area	5998.8	5916	5916

Program	Area in SF		
	Existing	State Standards	Proposed
4rd Grade			
Classroom	860	900	900
Classroom	870	900	900
Classroom	870	900	900
Classroom	860	900	900
Classroom	870	900	900
Classroom - special ed	596	600	600

Total	4330	5100	5100
Gross Multiplier for Circulation and Corridors (20%)	866	765	765
Gross Total Area	5196	5865	5865

5th-8th Grade			
Math Classroom	894	900	900
Math Classroom	915	900	900
Math Classroom	915	900	900
Math Classroom	894	900	900
teaming	459		460
Computer lab	632		
Storage	205	200	200
Classroom	885	900	900
Classroom	915	900	900
Classroom	312	900	900
Classroom	313	900	900
Storage	205	200	200
teaming	459		460
Computer lab	632		
Classroom	875	900	900
Classroom	787	900	900
Classroom	782	900	900
Classroom	880	900	900
Storage	220	200	200

Total	12179	11400	12320
Gross Multiplier for Circulation and Corridors (20%)	2435.8	2280	2464
Gross Total Area	14614.8	13680	14784

Program	Area in SF		
	Existing	State Standards	Proposed
Science			
Lab	1436	1200	1200
lab	1170	1200	1200
prep	278	300	300
Classroom	1027	1200	1200
Classroom	696	900	900
Storage	298	300	300
Storage	320	300	300

Total	5225	5400	5400
Gross Multiplier for Circulation and Corridors (20%)	1045	1080	1080
Gross Total Area	6270	6480	6480

Library and Computer Tech			
Library	2989	3000	3000
Computer Lab	407	0	0
Tech Ed	1200	1500	1500
Tech Ed	1540	1500	1500

Total	6136	6000	6000
Gross Multiplier for Circulation and Corridors (20%)	1227.2	1200	1200
Gross Total Area	7363.2	7200	7200

PE			
Weight Room	1284	1500	1500
Locker Room	503	600	600
Locker Room	421	600	600
Traning room	0	250	250
PE Storage	0	700	700
Athletic storage	0	900	900
Gym - currently 1.5 courts, need three	10607	24960	24960

Total	12815	29510	29510
Gross Multiplier for Circulation and Corridors (20%)	2563	5902	5902
Gross Total Area	15378	35412	35412

Commercial and Technical education			
Shop for woods, metal, soldering, electrical	0	3200	3200
Storage	0	800	800

Total	0	4000	4000
Gross Multiplier for Circulation and Corridors (20%)	0	800	800
Gross Total Area	0	4800	4800

Cafeteria			
------------------	--	--	--

Program	Area in SF		
	Existing	State Standards	Proposed
Cafeteria	6033	6000	6000
Kitchen	745	1000	1000
Total	6778	7000	7000
Gross Multiplier for Circulation and Corridors (20%)	1355.6	1400	1400
Gross Total Area	8133.6	8400	8400

Program	Area in SF		
	Existing	State Standards	Proposed
Arts and Language			
Art Room	1050	1200	1200
Storage	362	300	300
Storage	165	150	200
Music	1211	1500	1600
Music	199	200	300
Music	183	200	300
Music	156	200	200
Music	1680	1800	2000
Spanish	980	900	980
Music room on stage	800	1500	1500

Total	6786	7950	8580
Gross Multiplier for Circulation and Corridors (20%)	1357.2	1590	1716
Gross Total Area	8143.2	9540	10296

Restrooms			
Boys Restrooms - 3	750	750	750
Girls Restrooms - 3	750	750	750

Total	1500	1500	1500
Gross Multiplier for Circulation and Corridors (20%)	300	300	300
Gross Total Area	1800	1800	1800

Mechanical and Custodial			
Storage	92		
AHU	165	200	300
AHU	362	200	300
Storage	411		
AHU	126	200	300
Storage	111		
Storage	497	500	500
Custodial	610	1200	1200
Custodial	565		
Boiler Room	483	1200	1200
AHU	260	200	300
Storage	951	1200	1200
Warehouse Storage	0	1200	1200

Total	4633	6100	6500
Gross Multiplier for Circulation and Corridors (20%)	926.6	1220	1300
Gross Total Area	5559.6	7320	7800

Building Total Area	88,070	111,489	113,829
---------------------	--------	---------	---------

Prairie du Chien School District
Facility Assessment
2015-9-14



Program	Area in SF		
	Existing	National Standards	Proposed
PDC High School			
Administration			
Office	0	200	200
Office	0	200	200
Office	0	200	200
Office	0	150	150
Office	0	150	150
Office	0	150	150
Lobby	839	750	750
District Office	225	250	250
District Office	188	200	200
District Office	199	200	200
District Office	199	200	200
District Office	188	200	200
Storage	42	50	50
Storage	181	200	200
District Lab	634	650	650
Conference Room	0	850	850
Small Conference Room	0	650	650

Total	2695	5250	5250
Gross Multiplier for Circulation and Corridors (20%)	539	787.5	787.5
Gross Total Area	3234	6037.5	6037.5

Math			
Classroom	724	900	900
Classroom	724	900	900
Storage	74	100	100
Classroom	724	900	900
Classroom	724	900	900

Total	2970	3700	3700
Gross Multiplier for Circulation and Corridors (20%)	594	962	962
Gross Total Area	3564	4662	4662

Program	Area in SF		
	Existing	National Standards	Proposed
Health and Home Economics			
Home Economics	1581	1600	1600
Home Economics	564	550	550
Health	720	750	750
Buisness	720	750	750
Buisness	913	750	750

Total	4498	4400	4400
Gross Multiplier for Circulation and Corridors (20%)	899.6	880	880
Gross Total Area	5397.6	5280	5280

Science			
Lab	1359	1200	1200
Classroom	954	900	900
Storage	81	100	100
Storage	75	100	100
Storage	81	100	100
Classroom/Lab	1466	1200	1400
Storage	194	150	150
Storage	265	150	200
Storage	81	100	100
Storage	77	100	100
Classroom/Lab	1181	1200	1200
Storage	168	150	150
Bio Medical Classroom	1336	900	900
Storage	157	150	150
Storage	116	150	150
Office	199	250	250
Lab	0	1200	1200
Bio Lab	0	1200	1200

Total	7790	9300	9550
Gross Multiplier for Circulation and Corridors (20%)	1558	1860	1910
Gross Total Area	9348	11160	11460

Program	Area in SF		
	Existing	National Standards	Proposed
Library and Computer Tech			
IT	0	250	250
IMC	0	150	150
IMC	164	150	150
IMC	151	150	150
IMC	145	150	150
Computer Lab	839	750	750
IT	253	250	250
IMC	363	350	350

Total	1915	2200	2200
Gross Multiplier for Circulation and Corridors (20%)	383	352	440
Gross Total Area	2298	2552	2640

PE			
Concession Stand	561	550	561
Locker Room	1568	1500	1568
Locker Room	296	300	296
Locker Room	177	150	177
Locker Room	196	200	196
SAC Gym	2667	2800	2667
Weight Room	4341	4500	4341
Storage	208	200	208
Locker Room	691	700	691
Locker Room	180	200	180
Competition Gym two courts for PE or practice, one for competition	12,896	13,728	12896
Fitness/dance/cheerleading multipurpose room	0	3000	3000
PE Storage	0	800	800
Athletic Storage	0	1000	1000
PE & practice gyms with two courts, 600 seats	0	17888	17888

Total	23781	47516	46469
Gross Multiplier for Circulation and Corridors (20%)	4756.2	9503.2	9293.8
Gross Total Area	28537.2	57019.2	55762.8

Cafeteria			
Cafetria	1751	1700	1751
Dishwasher	234	250	234
Kitchen	421	430	421
Storage	230	230	230
Storage	233	230	233
Cafeteria	3050	3000	3050

Total	5919	5840	5919
Gross Multiplier for Circulation and Corridors (20%)	1183.8	1168	1183.8
Gross Total Area	7102.8	7008	7102.8

Program	Area in SF		
	Existing	National Standards	Proposed

Agriculture

FFA	2454	3000	3000
FFA	173	150	150
FFA	294	300	300
FFA	725	750	750
FFA	163	150	150
FFA	98	100	100

Total	3907	4450	4450
Gross Multiplier for Circulation and Corridors (20%)	781.4	890	890
Gross Total Area	4688.4	5340	5340

CTE

Woods	1781	3000	3000
Woods	240	550	550
Woods	0	250	250
Tech Ed	1471	3000	3000
Tech Ed	0	550	550
Stock/AH	875	1200	1200

Total	4367	8550	8550
Gross Multiplier for Circulation and Corridors (20%)	873.4	1710	1710
Gross Total Area	5240.4	10260	10260

New Auditorium/Theater

Stage 32'x60'	0		1920
wings 32'x32' x2	0		2048
house: 352 students, 40 staff, 720 seats(8.33 SF/seat)	0		6000
lighting control room 10'x22'	0		220
Orchestra pit 10'x44'	0		440
Fly rigging 4'x32'	0		128
Back stage circulation 4'x120'	0		480
Set Fabrication/shop 40'x50'	0		2000
set/prop storage 20'x30'	0		600
laundry/sewing 10'x14'	0		140
Robe storage 20'x12'	0		240
costume storage 10'x14'	0		140
Make up 20'x24'	0		480
boys dressing room 10'x14'	0		140
girls dressing room 10'x14'	0		140
Boys restroom 7'x8'	0		56
girls restroom 7'x8'	0		56
mens public restroom 20'x25'	0		500
womens public restroom 20'x25'	0		500
tickets 11'x11'	0		121

Program	Area in SF		
	Existing	National Standards	Proposed
stage stairs/ramps (2) 4'x8'	0		64
Stage vestibules (2) 7'x10'	0		140
Piano Storage 12'x12'	0		144
A/V storage rack 6'x15'	0		90
Shell Storage 12'x17'	0		204
lighting alcoves (4) 3'x3'	0		36
house ramps/stairs (2) 5'x36'	0		360
Stair (2) 10'x20'	0		400
Loading gallery 5'x32'	0		160
Catwalks (3) 4'x60'	0		720
Concessions 12'x20'	0		240
lobby 20'x30'	0		600
vestibule 10'x20'	0		200
janitor closet 10'x12'	0		120
mechanical room 14'x20'	0		280

Total	0	0	20107
Gross Multiplier for Circulation and Corridors (20%)	0	0	4021.4
Gross Total Area	0	0	24128.4

GED			
Classroom	450	750	750
Storage	0	150	150

Total	450	900	900
Gross Multiplier for Circulation and Corridors (20%)	90	180	180
Gross Total Area	540	1080	1080

Arts and Language			
Auditorium	3792	0	0
Chinese	0	750	750
English	715	750	715
English	732	750	732
Spanish	733	750	733
English	733	750	733
Spanish	720	750	720
Band	2255	2500	2255
Band	139	200	200
Band	118	200	200
Band	86	150	150
Band	63	150	150
Band	97	100	100
Band	158	150	150
Band	76	100	100

Program	Area in SF		
	Existing	National Standards	Proposed
Band	114	150	150
Band	84	100	100
Band	68	100	100
Music/Vocal	890	1200	1200
Art	1237	1500	1500
Clay Room	403	500	500
Storage	162	150	150
Storage	43	50	50
Storage	32	50	50
Storage	172	200	200
<hr/>			
Total	13622	12050	11688
Gross Multiplier for Circulation and Corridors (20%)	2724.4	2410	2337.6
Gross Total Area	16346.4	14460	14025.6

Program	Area in SF		
	Existing	National Standards	Proposed

Restrooms			
Lavatory	154	180	154
Lavatory	223	250	223
Lavatory	49	50	49
Restrooms	231	250	231
Restrooms	231	250	231

Total	888	980	888
Gross Multiplier for Circulation and Corridors (20%)	177.6	196	177.6
Gross Total Area	1065.6	1176	1065.6

Special Education			
Classroom	720	750	720
Classroom	732	750	732
Storage	89	100	89
Classroom	732	750	732
Storage	115	100	115

Total	2388	2450	2388
Gross Multiplier for Circulation and Corridors (20%)	477.6	490	477.6
Gross Total Area	2865.6	2940	2865.6

History			
Classroom	720	720	720
Classroom	720	720	720
Classroom	720	720	720

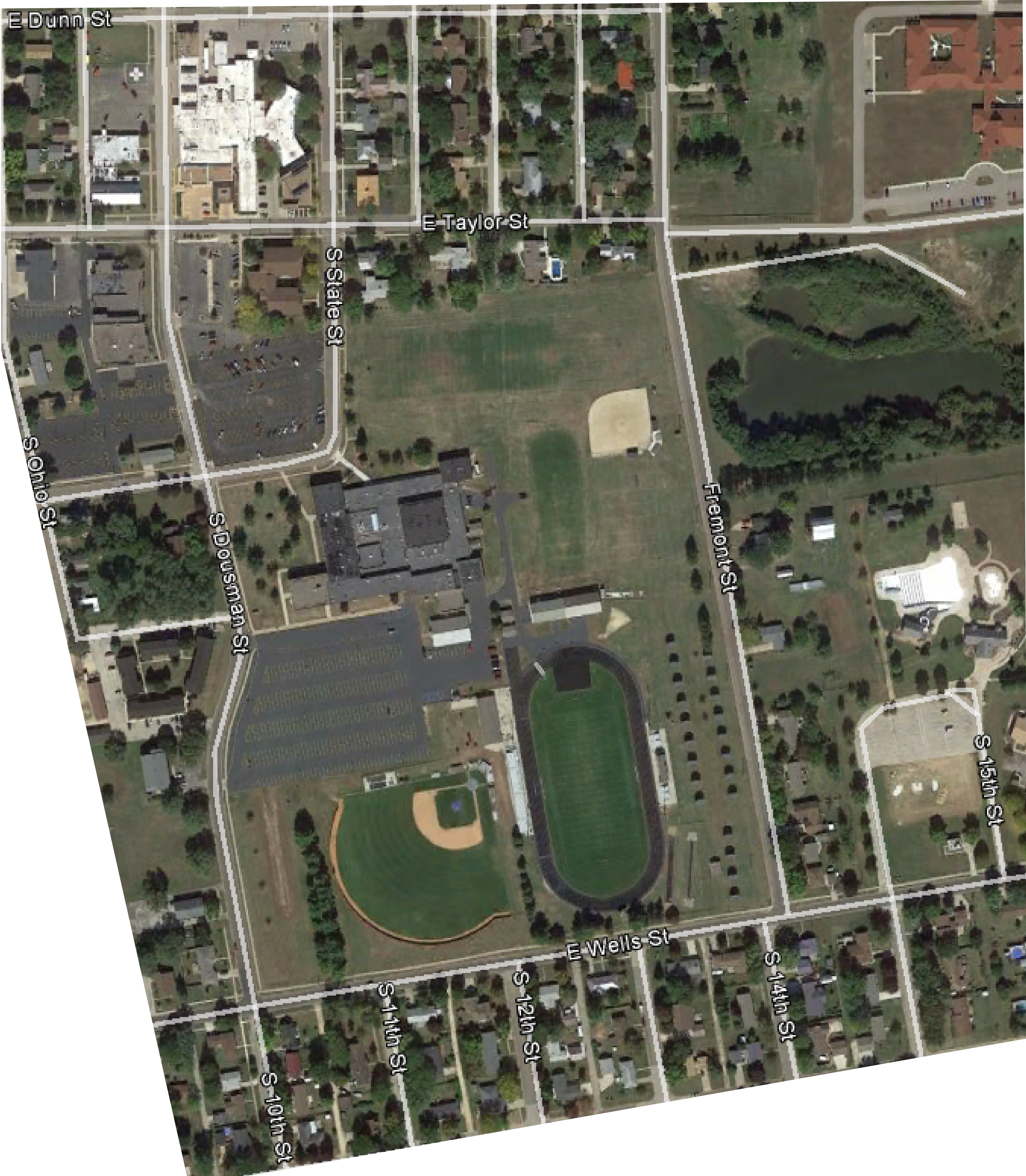
Total	2160	2160	2160
Gross Multiplier for Circulation and Corridors (20%)	432	432	432
Gross Total Area	2592	2592	2592

Mechanical and Custodial			
Storage	146	150	146
Storage	144	150	144
Storage	145	150	145
Storage	150	150	150
Storage	305	250	305
Boiler	352	350	352
Boiler	921	100	921
Storage	48	50	48
Custodial	172	180	172
Custodial	219	200	219
Storage	85	100	85
Storage	260	250	260
Storage	257	250	257

Program	Area in SF		
	Existing	National Standards	Proposed

Total	3204	2330	3204
Gross Multiplier for Circulation and Corridors (20%)	640.8	466	640.8
Gross Total Area	3844.8	2796	3844.8

Building Total	96664.8	158147.1
----------------	---------	----------



Prairie du Chien High School

1"=100'



Bluff View



BA Kennedy

Prairie du Chien Bluff View and BA Kennedy

1"=100'